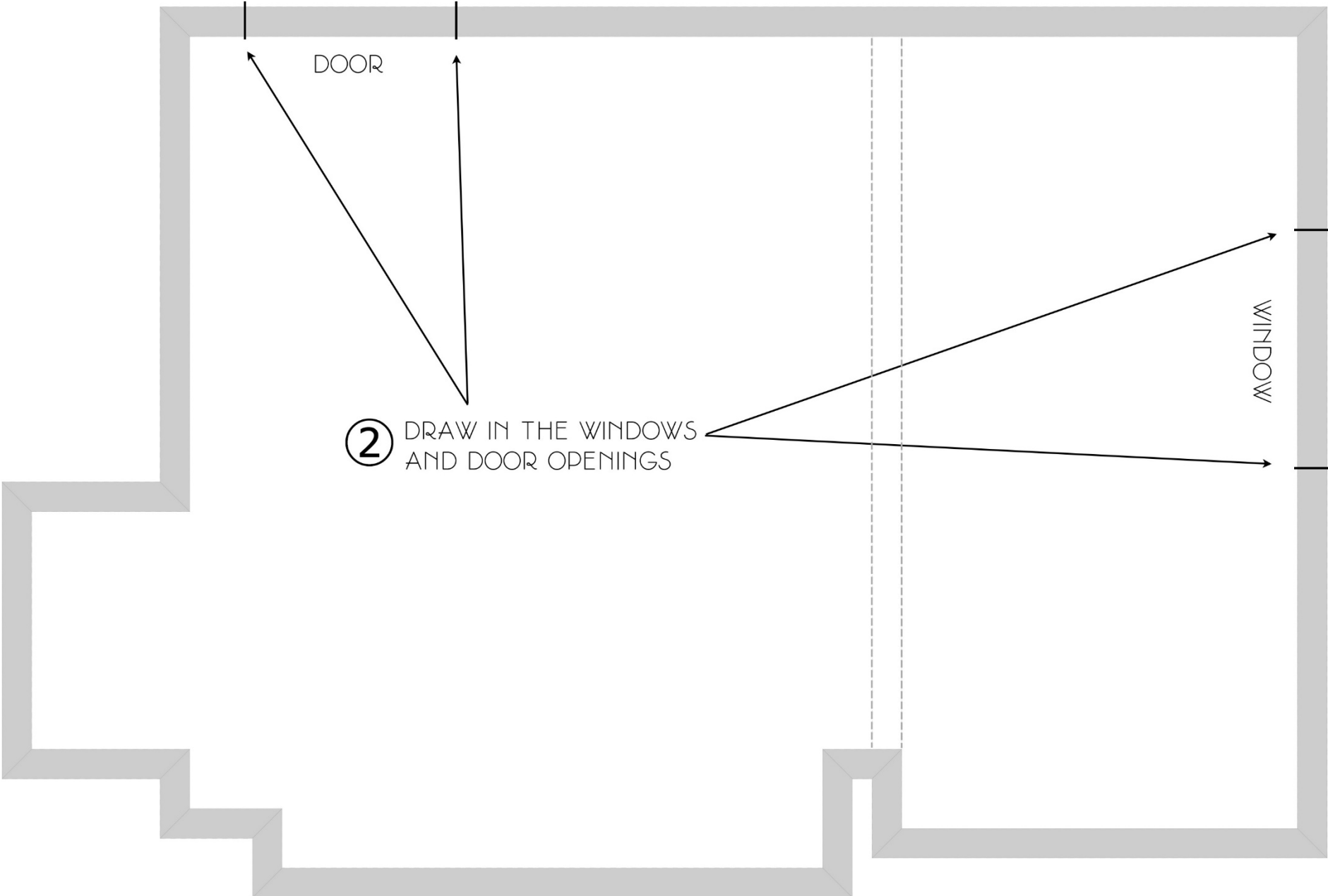


①

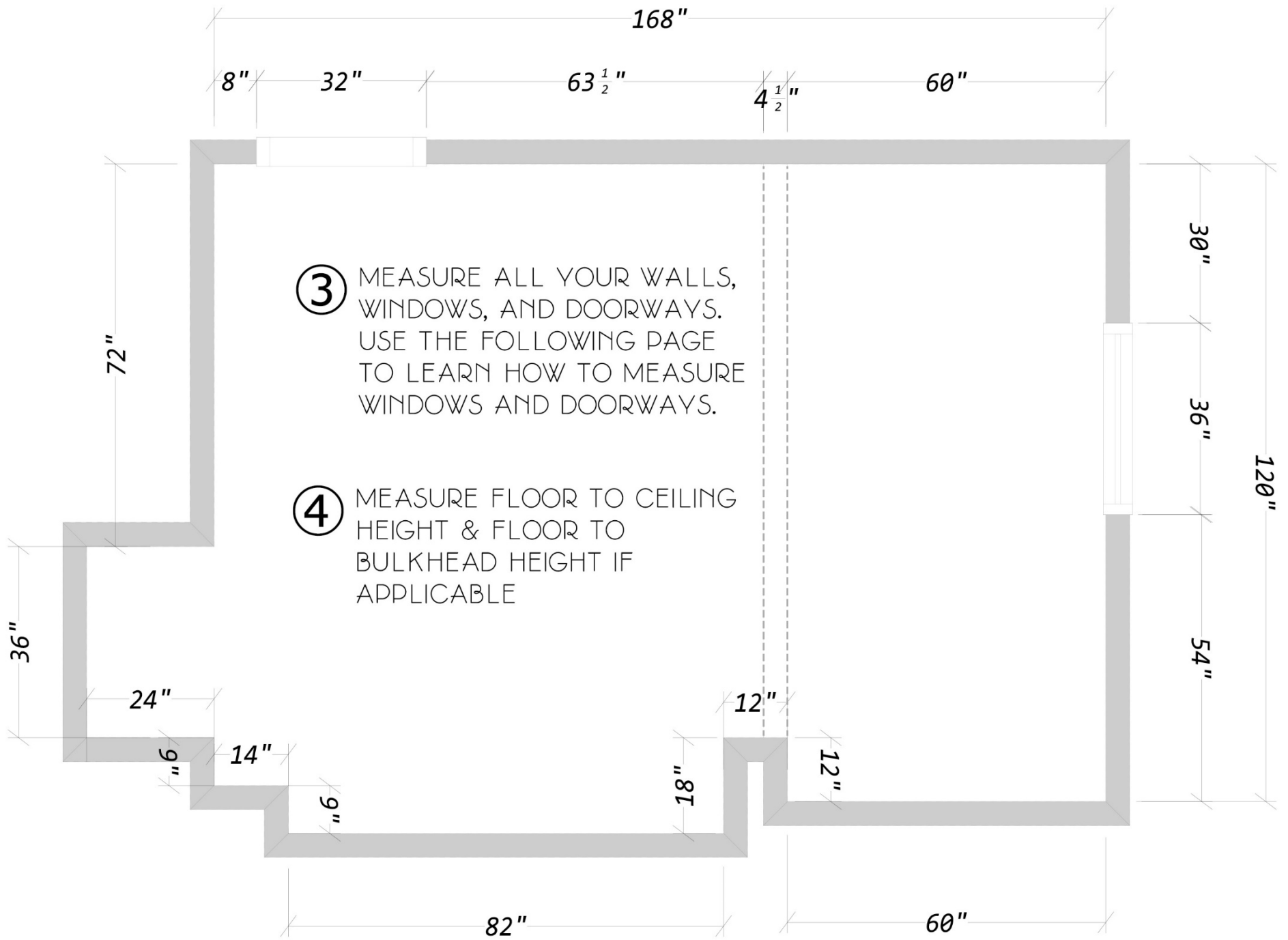
DRAW THE SHAPE OF THE ROOM INCLUDING ANY BUMP-OUTS, RECESSES, OR WALLS TO BE REMOVED

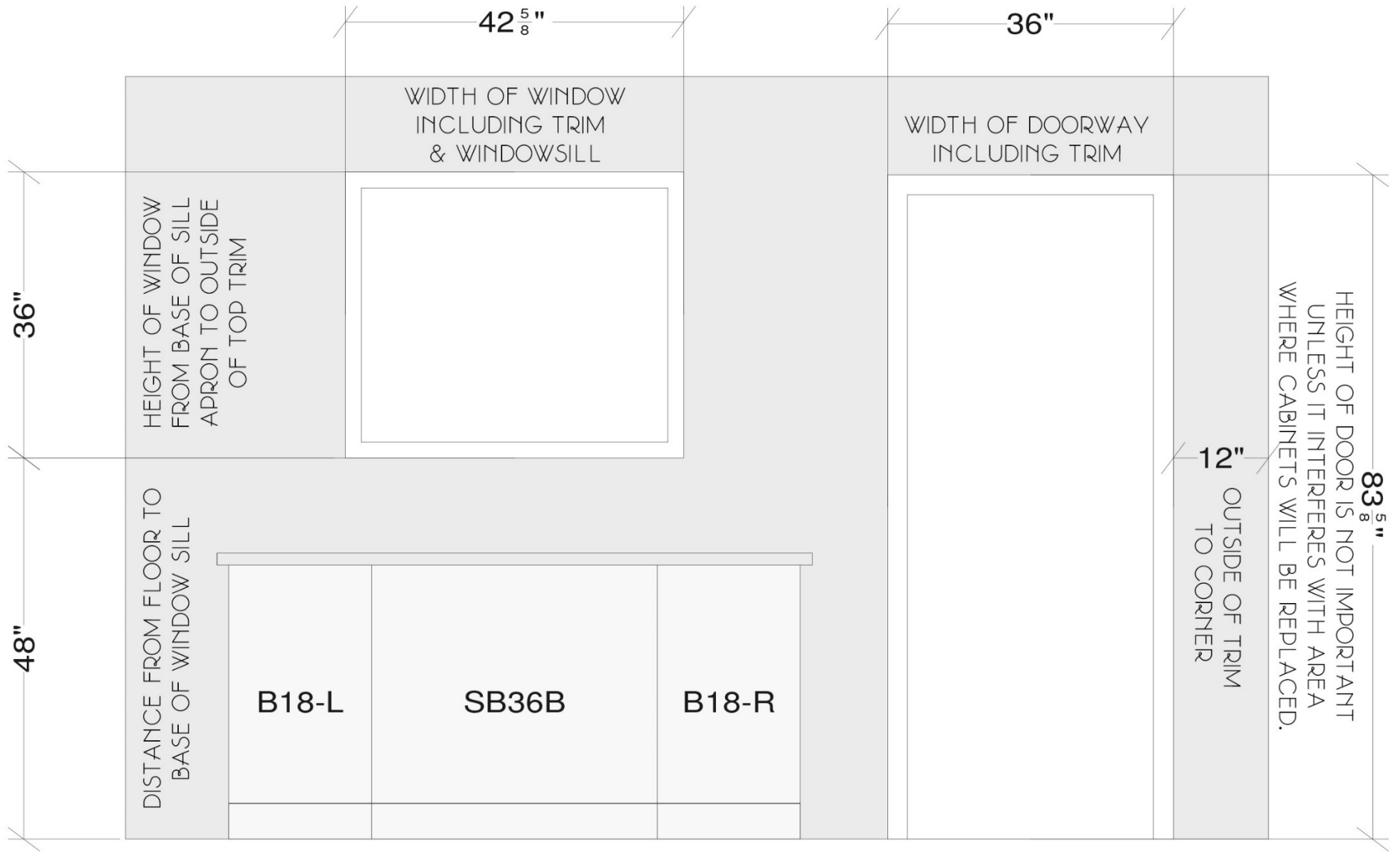


DOOR

② DRAW IN THE WINDOWS AND DOOR OPENINGS

WINDOW





HOW TO MEASURE WINDOWS

HOW TO MEASURE DOORWAYS

ONLY NECESSARY IF APPLIANCES/HEAT VENTS/OUTLETS/SWITCHES, ETC. ARE STAYING IN THE SAME PLACE

